

Open House 6th Grade Gifted Math

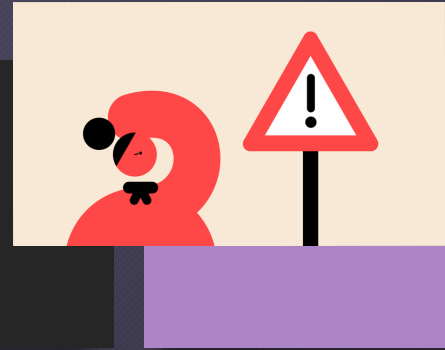
Ms. Martinez's Class

aliciacmartinez@dadeschools.net

Classroom Conduct

- Expectations:
- 1. Be respectful of yourself, others and the school at all times.
- 2. Be responsible for yourself and assignments.
- 3. Think before you speak or act. Remember every action has a reaction.
- 4. Put forth 100% effort in all activities.
- 5. Have fun learning something new every day.

Other General Rules



- 1. Follow directions the **FIRST** time they are given.
- 2. No eating or chewing gum in class
- 3. *Bring your mobile device EVERY class, and a charger please.*
 - Cellphones cannot be used for as a mobile device for assignments.
 - Cellphones are put away in the assigned cubby hanging from the black cabinet.
- 4. Always notify the teacher if you need to leave the room for any reason.
- 5. Keep your desk clean and tidy; remember you are sharing it with other students.
- 6. Come to class prepared with all needed supplies.
- 8. Be in your seat when class begins.
- 9. Always raise your hand to speak and wait to be called on.
- 10. Absolutely **NO BULLYING**, of any form in the classroom, by any students.
- 11. Only sit at your assigned seat.

Academic Dishonesty

- Students are expected to be honest and ethical in their academic work. Academic dishonesty is defined as an intentional act of deception in one of the following areas:
- Cheating: use or attempted use of unauthorized materials, information or study aids.
- Fabrication: falsification or invention of any information.
- Assisting: helping another commit an act of academic dishonesty.
- Tampering: altering or interfering with evaluation instruments and documents.
- Plagiarism: representing the words or ideas of another person as one's own.

Behavior Grade

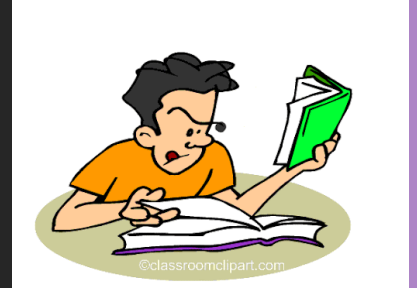
- If students do not follow the class rules they will earn a conduct cut.
- Every 3 conduct cuts the behavior grade will drop one letter.
- Once conduct cuts are earned, they cannot be erased until the end of the quarter.
- Behavior grade calculated using the scale below
 - 0-2 conduct cuts = A
 - 3-5 conduct cuts = B
 - 6-8 conduct cuts = C
 - 9-11 conduct cuts = D
 - 12+ conduct cuts = F

Schoology



- Students should check daily for homework assignment and other announcements/updates.
 - Upcoming assessments announced here
- Notes posted in “materials” section
 - Class policies and procedures can also be found in materials

Assignments



- Students are responsible for keeping track of all assignments.
 - If students do not have an agenda they should get one to write down due dates, hw, etc.
- Assignments not submitted on time will have a grade of “Z”.
- Late assignments will not be accepted unless it is an excused absence or there is an emergency (detailed in a note from the Parent/Guardian).

Homework



- Purpose of HW is for students to practice what they learned.
 - Homework is **graded on participation** so students can self-assess their understanding of the lesson and have the opportunity to ask questions next class.
- All homework assignments are due by 8 am on the due date, unless otherwise specified.
- Posted in Schoology
- Due to homework grading policy, late homework will not be accepted unless there is an excused absence.

Assessments



- I will be using tests, quizzes, and other assessments throughout the year to evaluate the students' mastery of each skill. Tests will be worth 2 grades, quizzes/classwork 1 grade and will be announced a few days in advanced.
- It is the student's responsibility to study the necessary material in the days leading up to each test/quiz.
- Other assessments such as projects may be worth more than 2 grades depending on the assignment. All information will be provided to students in advance with substantial time to complete the assignment

Grading Policy



- Grading Policy:
- Percentage GPA
- 100-90 A
- 89-80 B
- 79-70 C
- 69-60 D
- 59 ↓ F

I use the following categories with the assigned percentages to calculate the students' academic grade for each grading period.

Assessments: 35% (Tests= 2 grades,
Quizzes= 1 grade)

Classwork/Independent Work: 35%

Homework/Participation: 10%

Projects/Collaborative Work: 20%

Math Resources

All accessible through the student portal through “apps, services, sites”



Textbook

Accessible online through
Schoology

Covers ALL 6th grade standards and
HALF of the 7th grade standards

The other half of the 7th grade standards
will be covered in the 7th grade
Accelerated class



B.E.S.T Standards

- **FAST Test**

- Students will take three progress monitoring FAST tests.
 - PM 1 was administered August 29th
 - PM 2 will be some time in the middle of the year
 - PM 3 takes the place of the FSA at the end of the year

- **Other Changes...**

- Students are allowed a four-function calculator during Session 3 of the test
- All testing will be done on the computer
 - PM 2 will be some time in the middle of the year
 - PM 3 takes the place of the FSA at the end of the year

B.E.S.T Standards

• Other Changes...

- Students are allowed a four-function calculator during part of the test
 - See diagram for standards that allow calculator
- All testing will be done on the computer
 - All sessions of the test will be administered the same day

Grade 6 Mathematics Benchmark Coverage

Reporting Category	Benchmark	Calculator	% of Test
Number Sense and Operations	MA.6.NSO.1.1	NC	33-42
	MA.6.NSO.1.2	NC	
	MA.6.NSO.1.3	NC	
	MA.6.NSO.1.4	NC	
	MA.6.NSO.2.1	NC	
	MA.6.NSO.2.2	NC	
	MA.6.NSO.2.3	CL	
	MA.6.NSO.3.1	CL	
	MA.6.NSO.3.2	CL	
	MA.6.NSO.3.3	CL	
	MA.6.NSO.3.4	CL	
	MA.6.NSO.3.5	CL	
	MA.6.NSO.4.1	NC	
MA.6.NSO.4.2	NC	25-36	
MA.6.AR.1.1	NC		
MA.6.AR.1.2	CL		
MA.6.AR.1.3	CL		
MA.6.AR.1.4	CL		
MA.6.AR.2.1	CL		
MA.6.AR.2.2	CL		
MA.6.AR.2.3	CL		
MA.6.AR.2.4	CL		
MA.6.AR.3.1	CL		
MA.6.AR.3.2	CL		
MA.6.AR.3.3	CL		
MA.6.AR.3.4	CL		
MA.6.AR.3.5	CL	25-36	
MA.6.GR.1.1	CL		
MA.6.GR.1.3 Also Assesses MA.6.GR.1.2	CL		
MA.6.GR.2.1	CL		
MA.6.GR.2.2	CL		
MA.6.GR.2.3	CL		
MA.6.GR.2.4	CL		
MA.6.DP.1.1	NC		
MA.6.DP.1.2	CL		
MA.6.DP.1.3	CL		
MA.6.DP.1.4	CL		
MA.6.DP.1.5	CL		
MA.6.DP.1.6	CL		
Total Benchmark Groupings	39		100

NC = No Calculator available for items at benchmark
CL = Calculator is available for items at benchmark