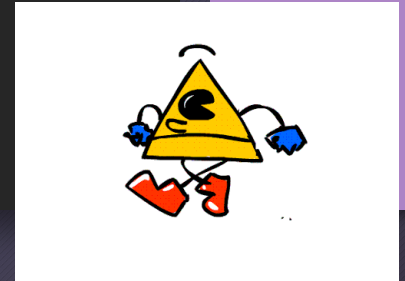


Open House Geometry Honors

Ms. Martinez's Class

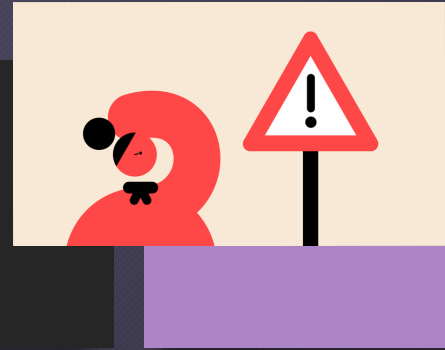
aliciacmartinez@dadeschools.net

Classroom Conduct



- Expectations:
- 1. Be respectful of yourself, others and the school at all times.
- 2. Be responsible for yourself and assignments.
- 3. Think before you speak or act. Remember every action has a reaction.
- 4. Put forth 100% effort in all activities.
- 5. Have fun learning something new every day.

Other General Rules



- 1. Follow directions the **FIRST** time they are given.
- 2. No eating or chewing gum in class
- 3. *Bring your mobile device EVERY class, and a charger please.*
 - Cellphones cannot be used for as a mobile device for assignments.
 - Cellphones are put away in the assigned cubby hanging from the black cabinet.
- 4. Always notify the teacher if you need to leave the room for any reason.
- 5. Keep your desk clean and tidy; remember you are sharing it with other students.
- 6. Come to class prepared with all needed supplies.
- 8. Be in your seat when class begins.
- 9. Always raise your hand to speak and wait to be called on.
- 10. Absolutely **NO BULLYING**, of any form in the classroom, by any students.
- 11. Only sit at your assigned seat.

Academic Dishonesty

- Students are expected to be honest and ethical in their academic work. Academic dishonesty is defined as an intentional act of deception in one of the following areas:
- Cheating: use or attempted use of unauthorized materials, information or study aids.
- Fabrication: falsification or invention of any information.
- Assisting: helping another commit an act of academic dishonesty.
- Tampering: altering or interfering with evaluation instruments and documents.
- Plagiarism: representing the words or ideas of another person as one's own.

Behavior Grade

- If students do not follow the class rules they will earn a conduct cut.
- Every 3 conduct cuts the behavior grade will drop one letter.
- Once conduct cuts are earned, they cannot be erased until the end of the quarter.
- Behavior grade calculated using the scale below
 - 0-2 conduct cuts = A
 - 3-5 conduct cuts = B
 - 6-8 conduct cuts = C
 - 9-11 conduct cuts = D
 - 12+ conduct cuts = F



Schoology



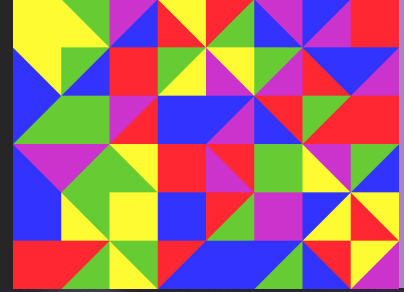
- Students should check daily for homework assignment and other announcements/updates.
 - Upcoming assessments announced here
- Notes posted in “materials” section
 - Class policies and procedures can also be found in materials
- Classwork is mostly assigned in their online book

Assignments



- Students are responsible for keeping track of all assignments.
 - If students do not have an agenda they should get one to write down due dates, hw, etc.
- Assignments not submitted on time will have a grade of “Z”.
- Late assignments will not be accepted unless it is an excused absence or there is an emergency (detailed in a note from the Parent/Guardian).

Homework



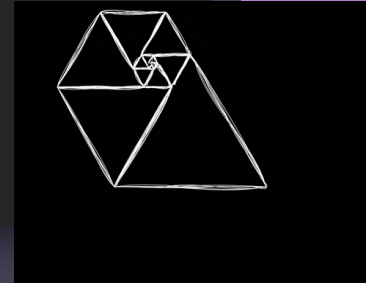
- Purpose of HW is for students to practice what they learned.
 - Homework is **graded on participation** so students can self-assess their understanding of the lesson and have the opportunity to ask questions next class.
- All homework assignments are due by 8 am on the due date, unless otherwise specified.
- Posted in Schoology
- Due to homework grading policy, late homework will not be accepted unless there is an excused absence.

Assessments



- I will be using tests, quizzes, and other assessments throughout the year to evaluate the students' mastery of each skill. Tests will be worth 2 grades, quizzes/classwork 1 grade and will be announced a few days in advanced.
- It is the student's responsibility to study the necessary material in the days leading up to each test/quiz.
- Other assessments such as projects may be worth more than 2 grades depending on the assignment. All information will be provided to students in advance with substantial time to complete the assignment

Grading Policy



- Grading Policy:
- Percentage GPA
- 100-90 A
- 89-80 B
- 79-70 C
- 69-60 D
- 59 ↓ F

I use the following categories with the assigned percentages to calculate the students' academic grade for each grading period.

Assessments: 35% (Tests= 2 grades,
Quizzes= 1 grade)

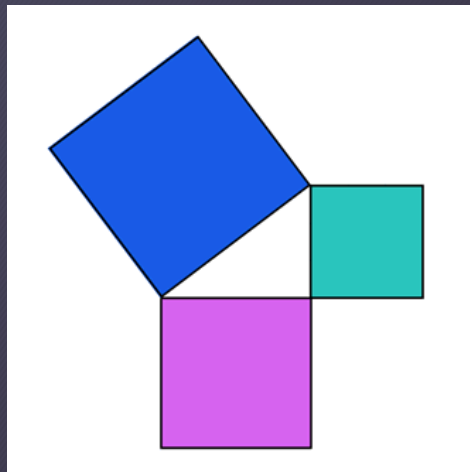
Classwork/Independent Work: 35%

Homework/Participation: 10%

Projects/Collaborative Work: 20%

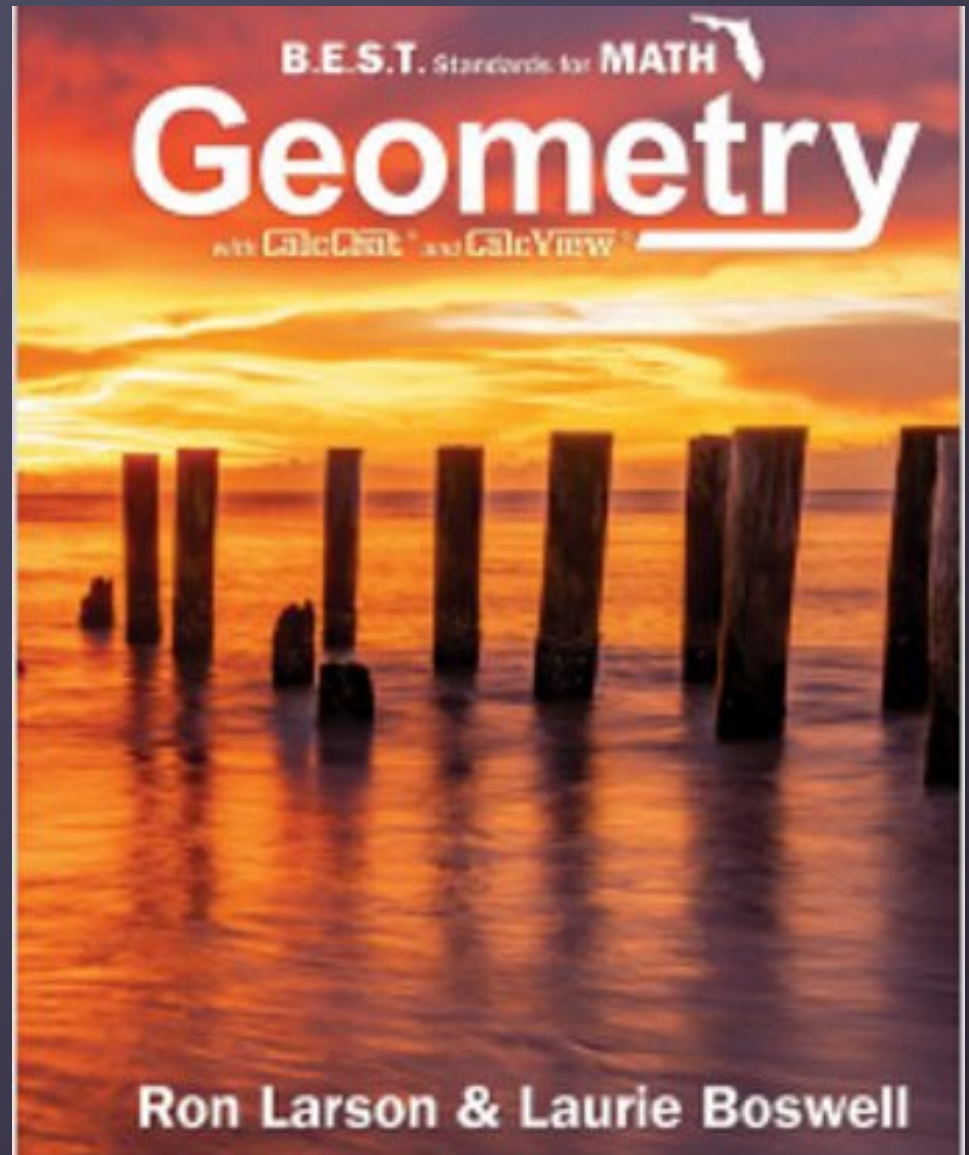
Math Resources

All accessible through the student portal under “apps, services, sites”



Textbook

- Accessible online through the Schoology or bigideasmath.com
 - Log-in with Clever
 - If asked for school location, type “Maritime Tech” and MAST should appear in drop down list.



B.E.S.T Standards

- EOC (End of Course)
- New EOC exam aligned to BEST standards
- All sessions will be taken the same day
- Scientific calculator for ALL sessions of the exam
 - Example calculators below

